

NEW!
natural
STONE LINE

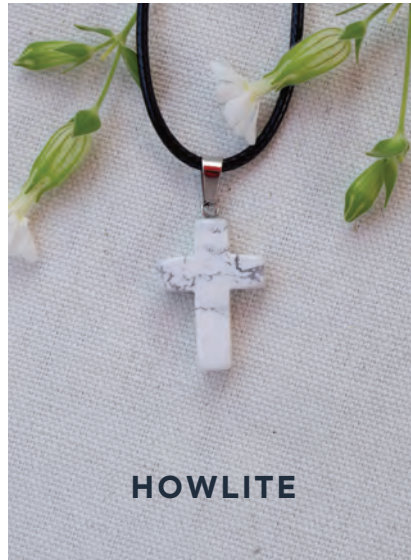
Introducing our new Natural Stone Line featuring 6 necklaces. Each piece is designed with genuine natural stone – some color and pattern variations will occur – making every piece as unique as your customers.



PICTURE JASPER

18" 100% Leather Cord

98573



HOWLITE

18" 100% Leather Cord

98574



SODALITE

20" Stainless Steel Chain

98575



AMETHYST

20" Stainless Steel Chain

98576



ROSE QUARTZ

20" Stainless Steel Chain

98577



PICTURE JASPER

20" Stainless Steel Chain

98578

98573 -9



98574 -9



98575 -9



98576 -9



98577 -9



98578 -9



NEW!

natural STONE KEY CHAINS

Our Natural Stone Key Chains are high quality without adding unnecessary bulk to your keys. Add inventory your customers will keep by their sides and enjoy everyday! Choose from three stone colorways.



ROSE QUARTZ

98750



SODALITE

98751



UNAKITE

98752

STYLES SUBJECT TO CHANGE BASED ON AVAILABILITY • 1-800-546-3699

TREE OF life

Introducing our new Tree of Life collection featuring trendy two-toned metal accents. Necklace comes affixed to a backing card with matching stud earrings.



Affixed to backing card for easy display 98487



98615



20" Brass Gift Set

98707

98750 - 8



98751 - 8



98752 - 8



98487 - 7.5



98615 - 6



98707 - 9



bangle BRACELETS

6 new designs have been added to our collection. Each has an adjustable clasp for a perfect fit. Simple and classic designs make these perfect for stacking.



98479



98480



98481



98482



98483



98484

JUST ADDED!

Self love BRACELETS

Take a look at 8 new bracelets available now! 98492-98495 have metal closures. 98488-98491 have semi-precious stones and are stretchable to fit a variety of sizes. All bracelets come on high quality backing cards for easy display.



Grateful 98492



Fearless 98493



Blessed 98494



Positive 98495



98488



98489



98490



98491

98479 - 12



98480 - 12



98481 - 12



98482 - 12



98483 - 12



98484 - 12



98492 - 8



98493 - 8



98494 - 8



98495 - 8



98488 - 7.5



98489 - 7.5



98490 - 7.5



98491 - 7.5



STYLES SUBJECT TO CHANGE BASED ON AVAILABILITY • 1-800-546-3699

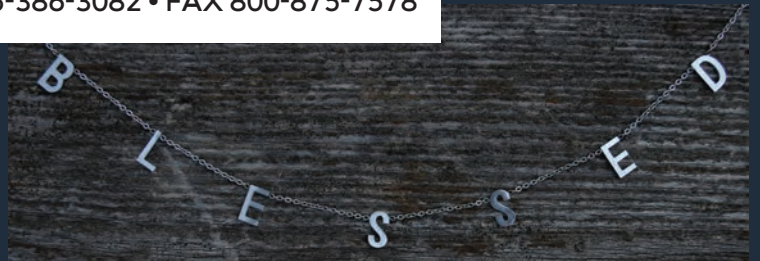


EDEN MERRY JEWELRY COLLECTION
 PHONE 715-386-3082 • FAX 800-875-7578

NEW!

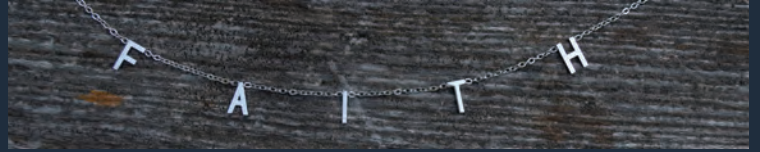
Meaningful NECKLACES

Keep a powerful reminder close to your heart with our Meaningful Necklace collection. Choose from 4 trendy, stainless steel designs.



20"

98579



20"

98580



20"

98581



20"

98582

NEW DESIGNS!

Pendant NECKLACES

Our most popular line now has 6 new designs accented with Austrian Crystals to choose from! Made from Copper with a Silver overlay along with a Rhodium plating that prevents tarnishing. There is something for everyone to enjoy in this collection.



18"



98175 18"



98176 18"



98177 18"



98178 18"



98179 18"

98180

STYLES SUBJECT TO CHANGE BASED ON AVAILABILITY • 1-800-546-3699



98486

98485

Magnetic HEARTS

Our Magnetic Hearts collection features 2 repeating designs with an easy-to-use and secure magnetic clasp. Perfect for everyday wear.

98579 - 9



98580 - 9



98581 - 9



98582 - 9



98175 - 10



98176 - 10



98177 - 10



98178 - 10



98179 - 10



98180 - 10



98485 - 7.5



98486 - 7.5

